

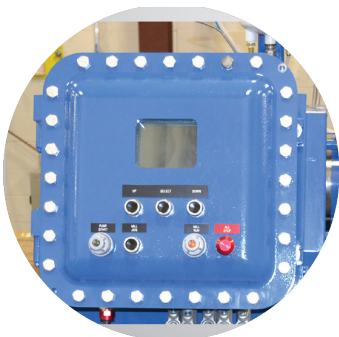
# SUPERMILL *Plus*®



Duplex Supermill *Plus*®

## VARIOUS CONTROL OPTIONS:

CMC "SMART" HMI style PLC Control Package. Available in explosion-proof or dust tight control consoles.

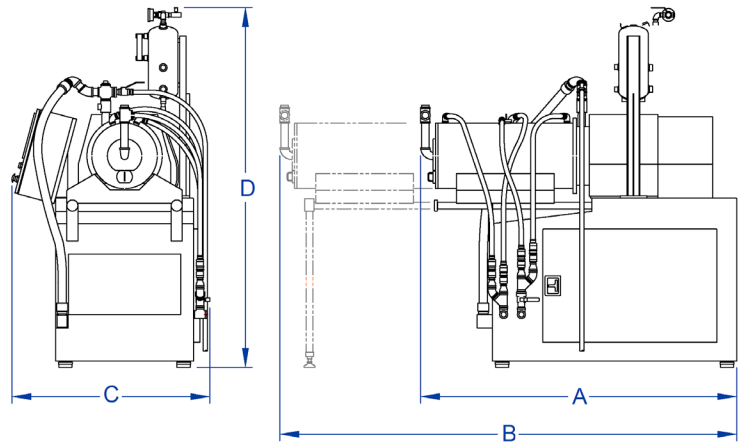
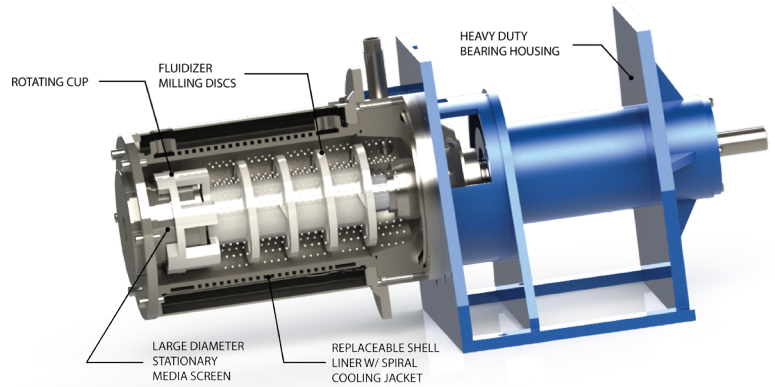


The **Supermill *Plus*®** media mill is the latest in horizontal media milling technology. Today's demanding applications require ultrafine, microscopic particle sizes. With its flexible design the **Supermill *Plus*** is able to process a wide variety of products and handle of range of viscosities. We offer a durable, efficient and maintenance friendly machine to incorporate into your production.

The **Duplex Supermill *Plus*®** media mill is designed with two horizontal chambers on one common frame. The product passes through the first chamber and directly into the second chamber without the need of a surge tank or separate feed pump. Typically, larger media is charged in the first chamber and finer media in the second chamber. This enables two stages of grinding in one continuous pass. CMC's **Duplex Supermill *Plus*** can also be configured to work as two separate horizontal media mills.

# SUPERMILL *PLUS*® FEATURES:

- Proven heavy-duty power frame with chemical resistant epoxy coating
- Cartridge style mechanical seal requiring no coolant pump
- Spirally cut cooling jacket for maximum heat extraction
- Easily removable media separator, conveniently located on the front end plate, accepts grinding media to 0.1 mm
- Flexible design allows for both discrete pass and high flow recirculation operation
- Unique Fluidizer® Milling Discs provide balanced intensive attrition throughout the grinding chamber, while minimizing product temperature and machine wear
- Variety of construction materials; including stainless steel, hardened alloys, ceramics, urethanes and engineered plastics
- Designed, tested and manufactured in Pennsylvania, USA



## Applications:

Agrochemistry • Ceramic/Glass  
Food • Printing Inks • Pigments/Dyes  
Paints • Coatings • Ores/Minerals/  
Metals • Life Science



sales@cmcmilling.com  
610.926.0984



Single Models	Main Motor (HP)	A	B	C	D	Weight (lbs)
SMP-5	15 / 20	49.5"	65.75"	36.25"	78.5"	2,300
SMP-15	25 / 30	56.25"	75.25"	36.25"	78.5"	2,500
SMP-45	50 / 60	76.75"	108.5"	44.25"	81"	3,200
SMP-60	60 / 75	78.5"	119.75"	46.25"	83.25"	4,200
SMP-90	75 / 100	82.25"	123.75"	46.25"	83.25"	4,400
SMP-120	100 / 125	98.75"	154.5"	54"	90"	5,500
SMP-200	125 / 150	106.75"	161.5"	54"	90"	5,800
SMP-600	200 / 250	144.75"	218.75"	91.5"	78.25"	Contact Factory
Duplex Models	Main Motor (HP)	A	B	C	D	Weight (lbs)
SMP-45II	50 / 60	76.75"	108.5"	62"	81"	6,200
SMP-60II	60 / 75	78.5"	119.75"	81"	83.25"	8,200
SMP-90II	75 / 100	82.25"	123.75"	81"	83.25"	8,600
SMP-120II	100 / 125	98.75"	154.5"	87.5"	90"	10,800
SMP-200II	125 / 150	106.75"	161.5"	87.5"	90"	11,400

Specifications included in this chart are for information purposes only and are subject to change.